

# CUTLER NORDIC TRAILS

25 miles SW of Dayton on  
US Highway 14 in the  
Bighorn National Forest



**Packing compliments of the  
Black Mountain  
Nordic Club**



## CUTLER'S COMMON SENSE GUIDE

- \* Always maintain control, and be able to stop or avoid other people or objects.
- \* People ahead of you have the right of way. It is your responsibility to avoid them.
- \* Please keep dogs under control.
- \* Clean up after your pet.
- \* Stop in areas where you are visible to others, do not obstruct the trail.
- \* Take time to read and understand signs and posted warnings.
- \* Fat bikes yield to other users. Leave room for others to pass (no side-by-side riding).



As a user of National Forest System lands, you have significant responsibility for your personal safety while using these trails. The nature of winter sports create constantly changing situations involving risks and hazards to participants.



Snow trails in mountainous terrain, whether groomed or not, present the potential for innumerable hazards. Be alert and prepared for rapidly changing weather conditions, visibility, and snow surface conditions. These may affect and alter the level of risk or hazard to the recreationist.

More information on Nordic trails and other winter activities available in the Bighorn National Forest may be obtained at any of the following District Offices:  
Sheridan (307) 674-2600  
Buffalo (307) 684-7806  
Greybull (307) 765-4435



## FACTS AND INFO

The Cutler Nordic Trails have approximately 5.5 miles of packed trails that average from 8100' to 8600' in elevation. The system was developed as an optional packed and marked system for people wanting to bring their dogs along. The Sibley Lake Nordic Trails do not allow dogs along the groomed trails to protect the groomed surface. So if you want to bring along Fido, Cutler offers a nice option.

The Black Mountain Nordic Club packs the Cutler trails. Club members annually contribute many days, equipment and money for maintenance and improvements to the trail system.

## A TIDBIT OF HISTORY



This area has been logged in the past. Nearly all of the roads where the trails now follow were constructed for timber harvesting purposes in the 1960s and 1970s. In 2018 the Johnson Creek timber sale was completed. As a result, one new ski trail was added this year and more are planned to be opened in future years. Slash piles will be burned once they have dried and cured.

Cutler Nordic Trails are well marked with blue diamonds on the trees and directional maps are posted at the trail intersections.

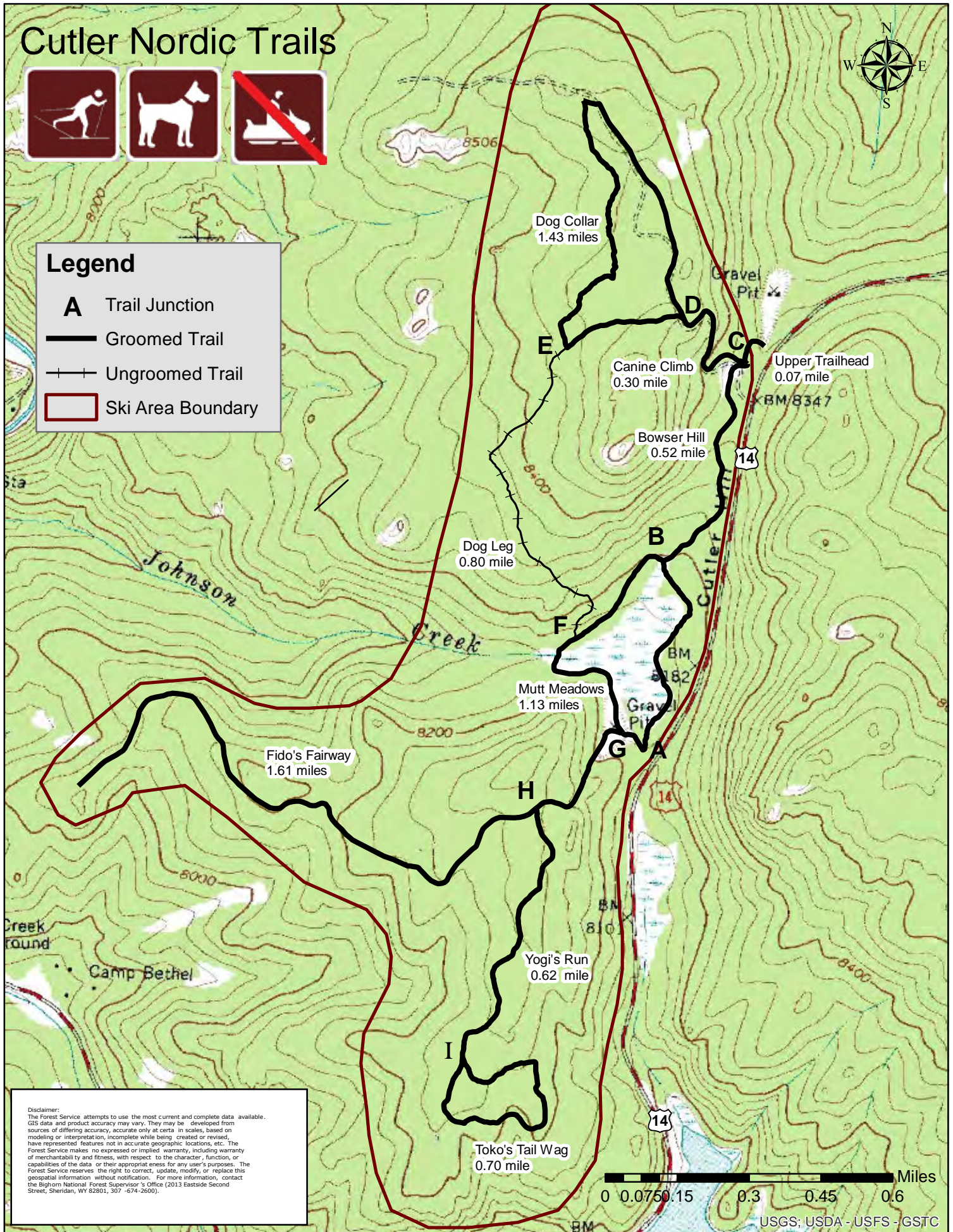


# Cutler Nordic Trails



## Legend

- A** Trail Junction
- Groomed Trail
- Ungroomed Trail
- Ski Area Boundary



**Disclaimer:**  
 The Forest Service attempts to use the most current and complete data available. GIS data and product accuracy may vary. They may be developed from sources of differing accuracy, accurate only at certain scales, based on modeling or interpretation, incomplete while being created or revised, have represented features not in accurate geographic locations, etc. The Forest Service makes no expressed or implied warranty, including warranty of merchantability and fitness, with respect to the character, function, or capabilities of the data, or their appropriateness for any user's purposes. The Forest Service reserves the right to correct, update, modify, or replace this geospatial information without notification. For more information, contact the Bighorn National Forest Supervisor's Office (2013 Eastside Second Street, Sheridan, WY 82801, 307-674-2600).

